



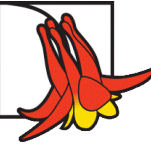
Hopes & Dreams for Big Rock Park South



Sammamish
**BOTANICAL
GARDEN
SOCIETY**

Our wish is to create a beautiful setting, one where quiet places in nature bring serenity and plant knowledge.

MAY 4, 2022



Sammamish Botanical Garden Society (SBGS)

- 503(c)(3) non-profit formed in 2019 with a lofty goal: a botanical garden and educational programs for the City of Sammamish
- Our Board and SBGS members include:
 - Master gardeners
 - Naturalists & trained stewards
 - Trained horticulturists
 - Experienced docents
 - Educators
 - Administrators

Provide **education programs** for youth and adults

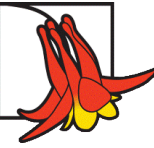
Provide **resources for gardeners** in our community

Offer outdoor **nature activities**

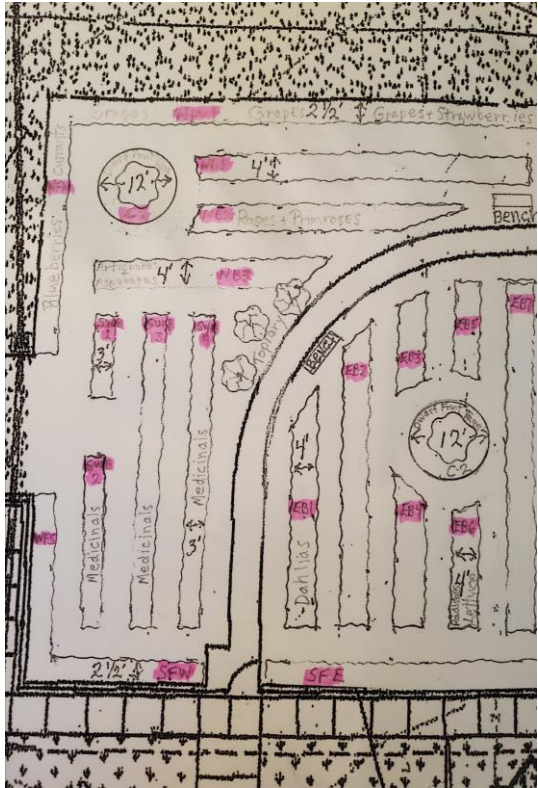
Create **partnerships** with the City and other community organizations to **create Heritage Garden & Botanical Garden**

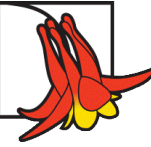
Curate plants in a **botanical garden database**

Develop **research programs** that will help to solve present issues of plant disease, and offer options for achieving a clean, pesticide and herbicide free garden environment.



A Garden is Grown





We are in this together!

Partnerships

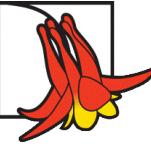
- Strong partnership with the City
- Network of community partners

Members

- Membership is increasing annually

Grants, Fundraising & Donations

- Raised all funds for projects and continue to increase funds for future projects.
- Plants donated by members of SBGS & the community



Partners & Community Relationships

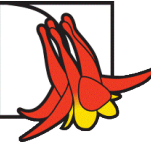


Puget Sound Dahlia Association



Sammamish Stewards





Examples of Partners in the Garden



Sammamish Stewards steward the Native Pollinators bed



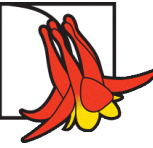
Food harvested from the garden is donated to the **Issaquah Food & Clothing Bank**



Puget Sound Dahlia Association sponsors the Dahlia bed



Sammamish Friends grant helped establish herb beds

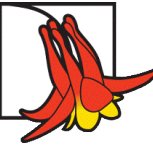


Volunteers in the Garden

Public gardens are powered by volunteers

Many hands make light work. The Heritage Garden has been brought to life by students, residents, passionate gardeners, friends, families and neighbors.





Events & Community Outreach



Guided Docent Tours



In-person Children's classes



October Seed Packaging & Giveaway



Private garden tours

SBGS offers many education & community events for all ages



Quarterly Newsletter, 2022 Q1

In this edition:

- The Start of the New Season - by Janette Deutch
- Spring in the Heritage Garden - Bruce Canedo and Lena Weener
- Join SBGS for 2022!
- Featured Plants - Tasty Tomato Tree - Janette Deutch
- Branching Out - Book Review: Private Gardens of the Pacific Northwest

Quarterly Newsletter with Articles

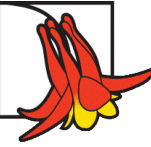


Online Children's Workshops



Teen & Adult Workshops





Community feedback

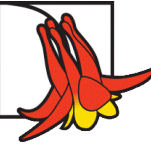
I was just at Big Rock Central. Go see the garden if you haven't been lately. It's gorgeous!!! Thank you to our community members for working so hard on this for all to enjoy! (Facebook)

It's a wonderful garden. Very well done! (Facebook)

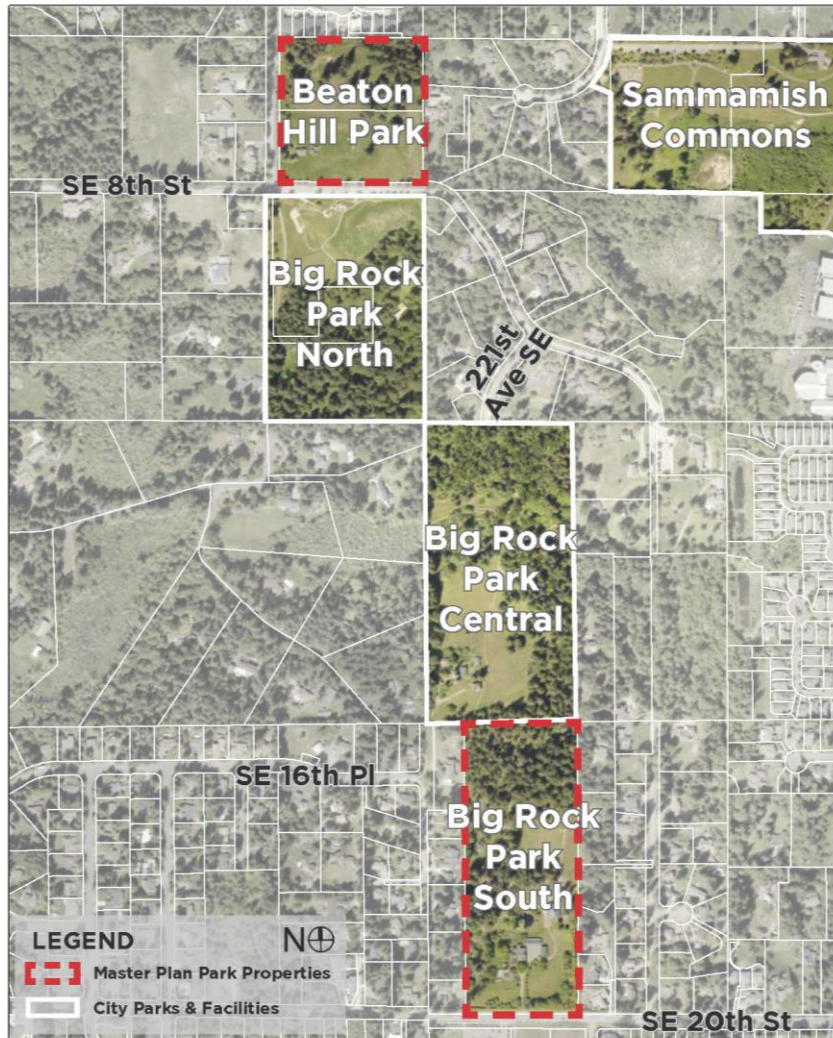
The flowers are so pretty. (Facebook)

Thank you for the tour of your garden. The kids really enjoyed it. ...We can't wait to visit the garden in a couple weeks to see if the squash seeds have sprouted. (Preschool teacher)

Just discovered this place, been walking every day because it is few minutes walking distance from my house, love the trails & heritage garden. (Facebook)

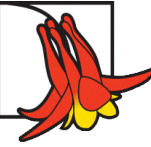


Site Map



Our Hopes & Dreams

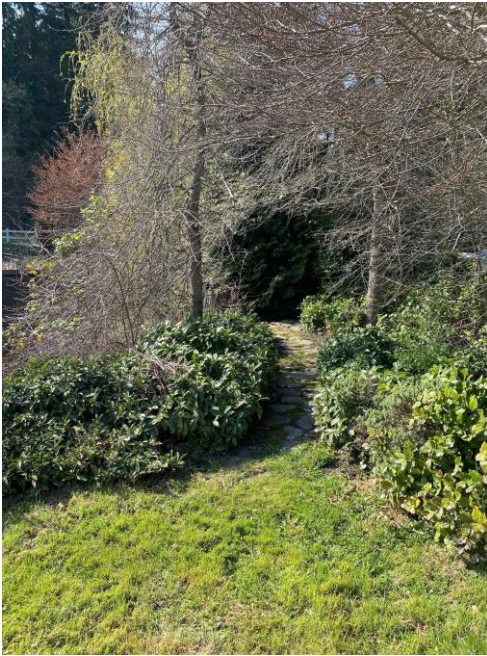
- The donation of the three Big Rock Park properties to Sammamish is a gift reaching far into the future.
- The development of Big Rock Park South gives us the unique opportunity to create a space for all to enjoy. SBGS hopes to be instrumental in developing a botanical garden and education offerings.
- Proven SBGS & Heritage Garden Success
- We are ready to partner with the City and community in this new endeavor!
- We are networked in this community and hope to work in cooperation with other community organizations:
 - Such as Sammamish Stewards to partner with a greenhouse
 - Other local groups interested in education and developing a community center

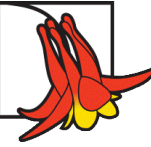


Botanical Garden

At the Open House, we saw the foundation of a botanical garden already in place:

- Existing beds with some established plantings
- Pathways leading to different garden areas showcasing different garden styles and microclimates.
- Structures that could be adapted for community enjoyment





Educational Opportunities

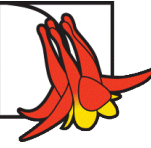


- Designated garden areas for featuring “Great Plant Picks” for the maritime PNW
- Shared Greenhouse for education, propagation, and salvaging.
- Structures supporting classroom workshops and outdoor spaces: year-round education
- Pathways linking the existing Heritage Garden easily promote education opportunities between the two spaces



Possible future shared greenhouse





How do we get there?



- Continue partnership with the City
- Phased approach
 - assess health of the garden
 - inventory of existing plants
 - augment what is there to improve appeal
- Expand our partner network
- Raise capital through grants and fundraising. Increase private donations through community outreach events.



"A garden, where one may enter in and forget the whole world, cannot be made in a week, or a month, or a year. It must be planned for, waited for, and loved into being."

Thank you!

INFO@SAMMAMISHBOTANICAL.ORG